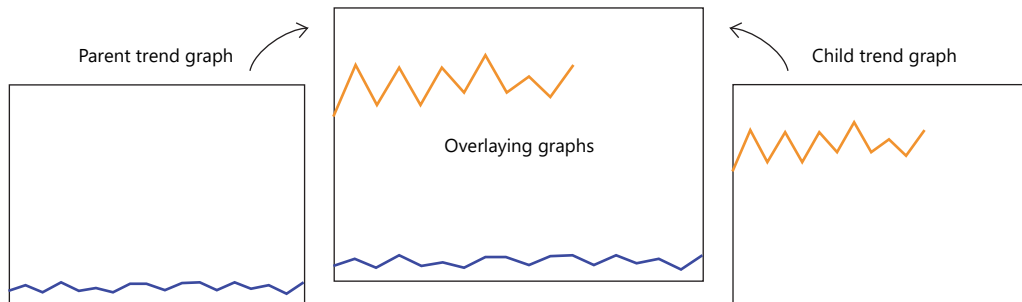


## 7.3.5 Asynchronous Display of Multiple Trend Graphs

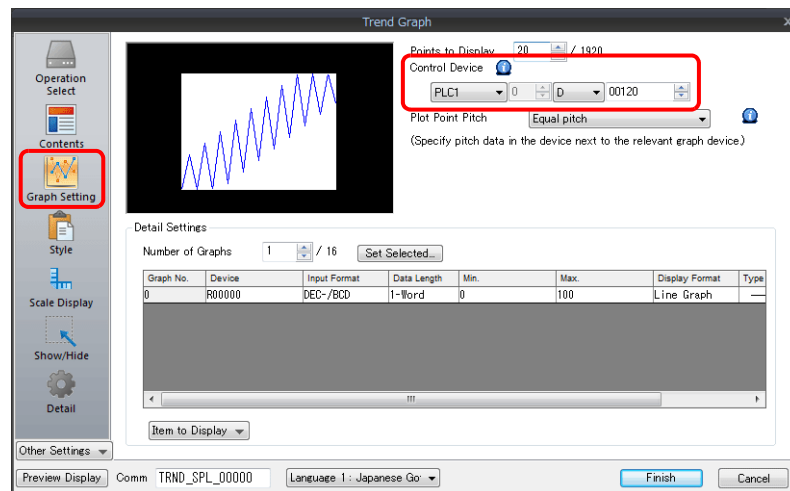
All the trend lines in the graph area are drawn at the same points and at the same timing because trend graphs have one word of control device memory. To draw multiple trend lines at different timings, two or more graphs must be overlaid and linked, thereby assigning priorities to respective control device memory.



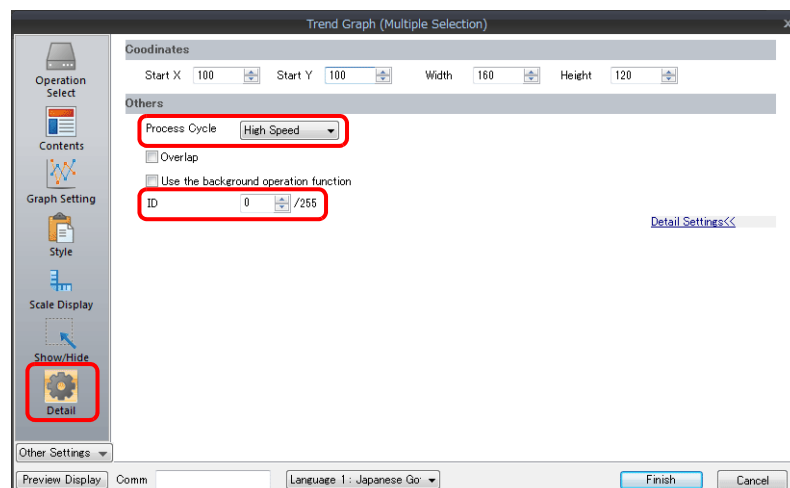
### Setting Procedure

This section explains drawing multiple graphs with an example of displaying two trend graphs asynchronously.

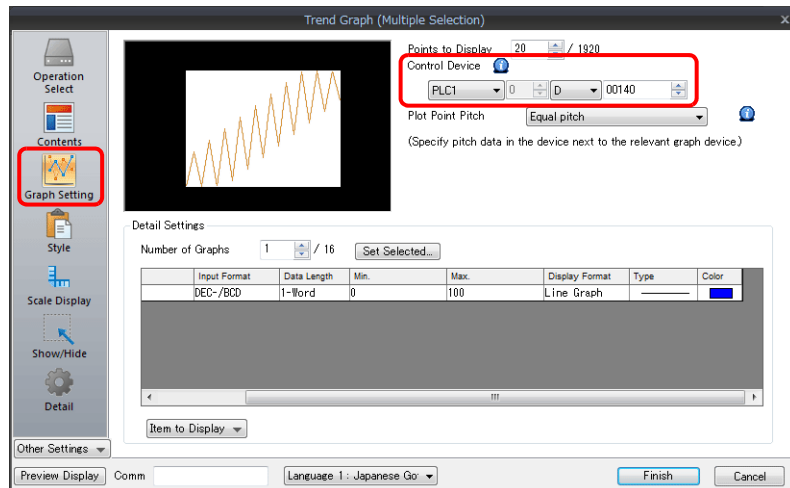
1. Place two trend graphs.
2. Set D120 to [Graph Setting] → [Control Device] in the [Trend] settings window.



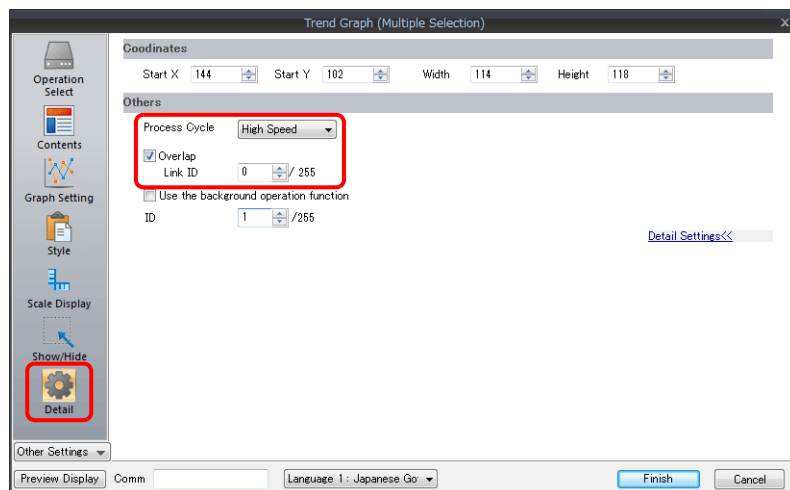
3. Set "High Speed" for [Detail] → [Process Cycle] and "0" for [ID] (parent trend graph).



4. In the [Trend] settings window of the other graph, set D140 to [Graph Setting] → [Control Device].



5. Set "High Speed" for [Detail] → [Process Cycle] and "0" for [Overlap] (child trend graph).



6. Place the parent trend graph under the child trend graph to overlap the two graphs.

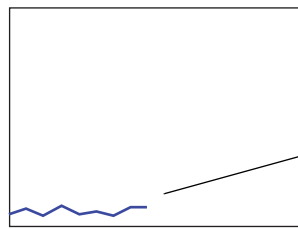
This completes the necessary settings.

The graphs are drawn using the D120 control device memory (parent trend graph).

## Display Method

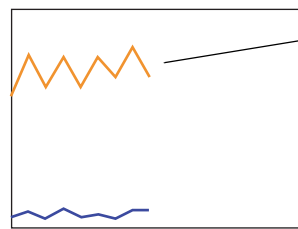
This section explains how to draw two trend graphs based on the example in "Setting Procedure" page 7-45.

1. Set D120 to 9H (number of plotted points).



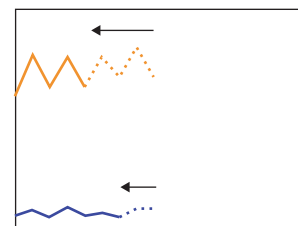
The parent trend graph is drawn with up to 9 plot points.

2. Set D140 to 9H (number of plotted points).



The child trend graph is drawn with up to 9 plot points.

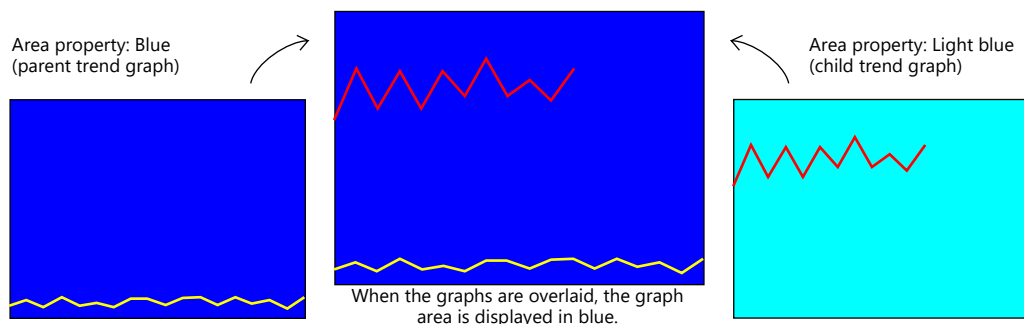
3. Set the D140 to 5H (number of plotted points) and set D120 to 8007H ("redraw after clear" and number of plotted points).



Change the number of plotted points to 5 points in the child trend graph and send the "change" and "redraw after clear" commands from the parent trend graph at the same time. The 5 points of the child trend graph are drawn for the first time.

## Notes on Setting

- When linking two or more trend graphs, regard one trend graph as a "parent" and the other trend graph as a "child." Select the [Detail] → [Overlap] checkbox for the child trend graph and set the ID of the parent trend graph. Both the "redraw" and "redraw after clear" commands issued at the child trend graph are ignored and only the commands from the control device memory of the parent trend graph are accepted.
- Set [Process Cycle] to "High Speed" for all the trend graphs that are linked.
- Only the area property settings of the parent trend graph are available. The area property settings of the child trend graph are not displayed. In addition, the reference lines set for the child trend graph area ignored.
- Place the child trend graph over the parent trend graph using the [Bring to Top] or [Send to Bottom] icon. If the parent trend graph is placed over the child trend graph, these two graphs will not be linked correctly.



- When the parent trend graph is set to be always displayed, both the parent and child trend graphs are displayed at all times.