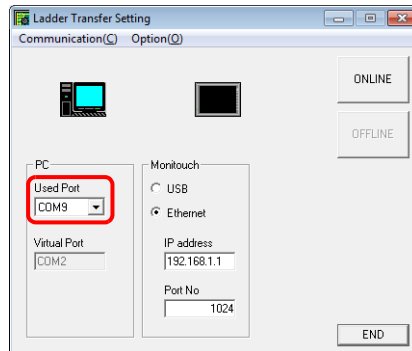


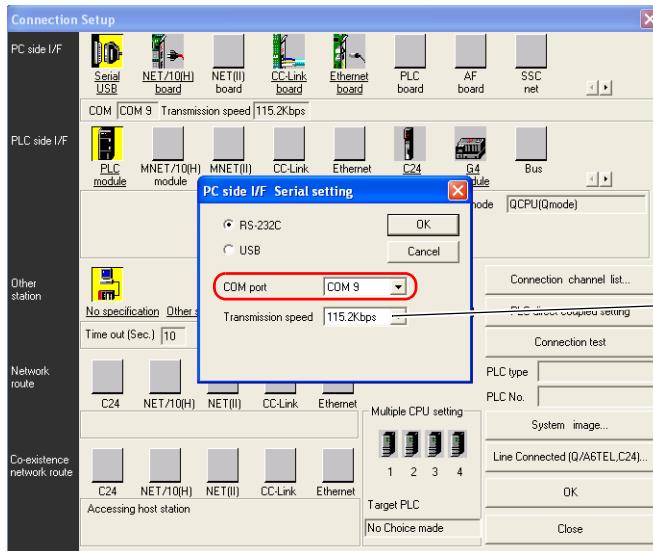
PLC Programming Software Settings

Set the COM port number configured in the [Ladder Transfer Setting] window of LadderComOp to the following window of the relevant PLC programming software to enable communication with the PLC.

Example: [Ladder Transfer Setting] window, COM port number 9



MITSUBISHI ELECTRIC GX Developer/GX Works2



For [Transmission speed], specify the same value as the baud rate between the V9 series unit and the PLC.

OMRON CX-Programmer

Be sure to select "SYSMAC WAY" for [Network Type].

[Network Settings] dialog → [Driver] → [Port Name]

For [Baud Rate], specify the same value between the V9 unit and the PLC.

Panasonic "FPWIN GR"

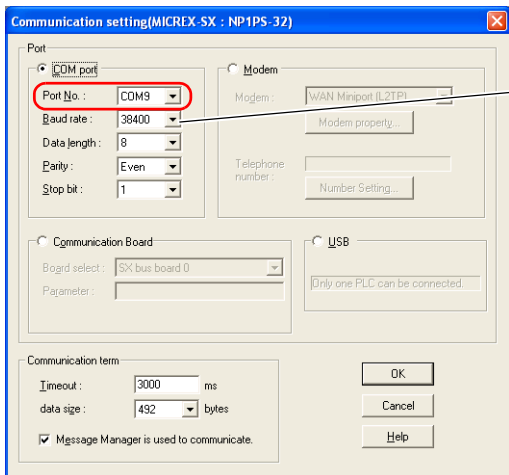
[Communication Settings] dialog → [Port No.]

For [Baud Rate], specify the same value between the V9 unit and the PLC.

Yokogawa Electric "Wide Field2"

[Environmental Settings] dialog → [Communication Settings] → [COM Port No.]

Fuji Electric SX-Programmer Expert (D300win)

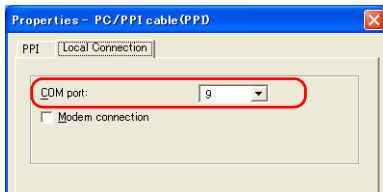


For [Baud rate], specify the same value as the baud rate between the V9 series unit and the PLC.

12

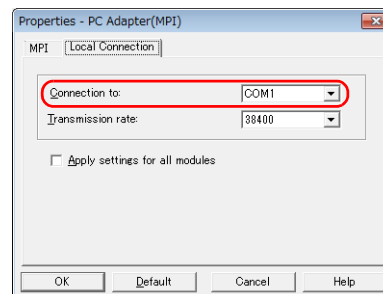
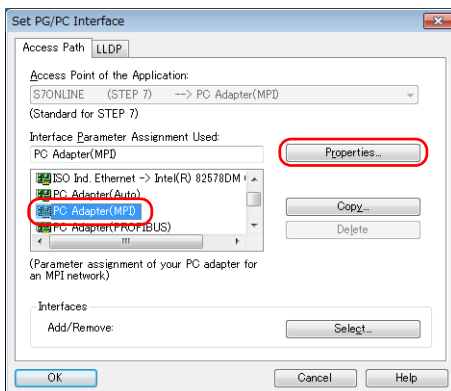
Siemens "STEP 7-Micro/WIN"

[Set PG/PC Interface] dialog → [PC/PPI cable (PPI)] → [Properties].



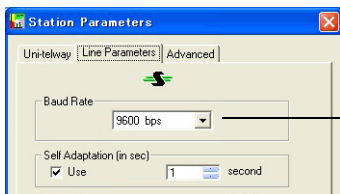
The baud rate between the V9 unit and the PC is fixed to 115 Kbps.

Siemens SIMATIC Manager

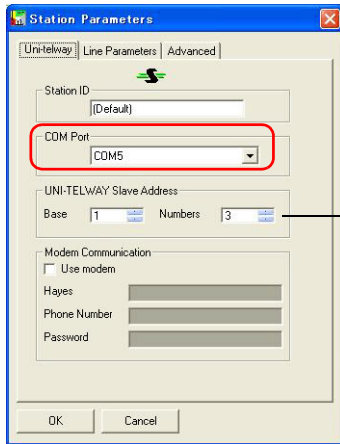


Set [Connection to:] in the range of COM1 to 8.
[Transmission rate:] does not need to be changed.

Telemecanique Drivers Manager



Specify the same baud rate for both the V9 series unit and PLC.



UNI-TELWAY Slave Address Specify the same [Base] and [Numbers] values.

V-SFT
[System Setting] → [Hardware Setting] → [Ladder Transfer] → [Detailed Setting]

