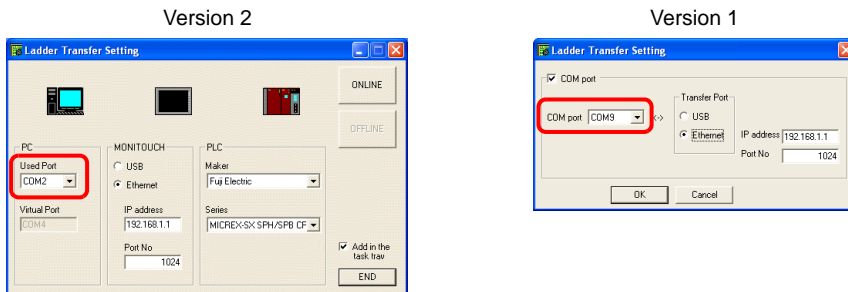


PLC Programming Software Setting

Once you have specified a COM port in the [Ladder Transfer Setting] dialog in LadderComOp, set the COM port in the dialog shown below in the programming software for your PLC.

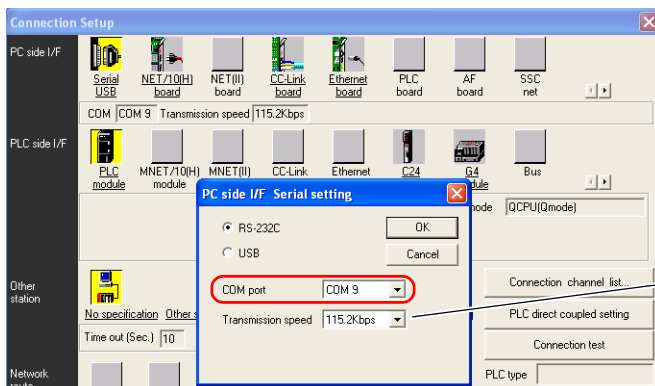
Example: COM port No. 9 in the [Ladder Transfer Setting] dialog



Notes on the use of LadderComOp version 1

- If your computer has no serial port, selecting a COM port may be disabled, depending on the PLC programming software. Proceed to the LadderComOp settings beforehand. For setting procedure, refer to [Ladder Transfer Setting] (page 27-18).
- In the case of ladder transfer via USB, turn on the V8 unit and establish its connection with the computer via a USB cable before proceeding to the COM port setting. Otherwise, the COM port specified in LadderComOp cannot be identified.

MITSUBISHI ELECTRIC “GX Developer/Gx Works2”



For [Transmission speed], specify the same value as the baud rate between the V8 unit and the PLC.

OMRON CX-Programmer

Be sure to select “SYSMAC WAY” for [Network Type].

[Network Settings] dialog → [Driver] → [Port Name]

For [Baud Rate], specify the same value between the V8 unit and the PLC.

Panasonic “FPWIN GR”

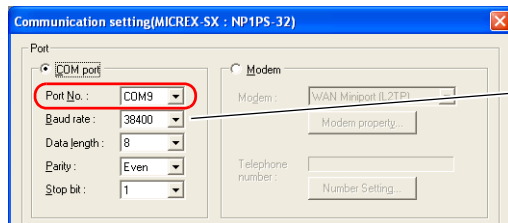
[Communication Settings] dialog → [Port No.]

For [Baud Rate], specify the same value between the V8 unit and the PLC.

Yokogawa Electric “Wide Field2”

[Environmental Settings] dialog → [Communication Settings] → [COM Port No.]

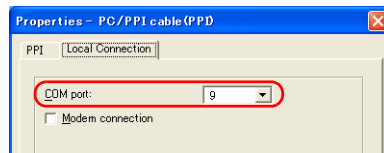
Fuji Electric “SX-Programmer Expert (D300win)”



Specify the same value as the baud rate between the V8 unit and the PLC.

Siemens “STEP 7-Micro/WIN”

[Set PG/PC Interface] dialog → [PC/PPI cable (PPI)] → [Properties].



The baud rate between the V8 unit and the PC is fixed to 115 Kbps.

27

Notes

Transferring Screen Data

- Observe the following when transferring ladder and screen data via a USB cable.
 - Switch to the Main Menu screen on the V8 series.
(Ladder communication is enabled on the RUN screen only.)
 - Place LadderComOp version 2 offline.
(For more information on this setting, refer to [Ladder Transfer Setting] (page 27-18).)
- To use ladder transfer function via USB/Ethernet with Siemens S7-200 PPI, please make sure to switch to the Main Menu screen before transferring screen data.
(Ladder communication is enabled on the RUN screen only.)

When Using LadderComOp Version 1

- Whenever you have made changes to the LadderComOp settings, restart the PLC programming software. With a Fuji Electric PLC, terminate the message manager in the task manager before restarting the PLC programming software.

Others

- To use PC as users, the following configurations need to be done beforehand.
 - 1) Log on as Administrator.
 - 2) Start [LadderComOp] and make settings for [Used Port] (for version 1, [COM port]).
- * It may take time to close [LadderComOp] after initial settings. Please also note that if you start the software without administrator authorization, the message, “Please start from the set of COM port with administrator.” will be displayed.

- The following messages will be displayed in the top left of V series while accessing Siemens S7-200 PPI by using ladder transfer function via USB/Ethernet, especially for transferring large files such as programs.
V series will restore automatically after the access is completed.
 - PLC1 Access denied by Loader
 - PLC1 In Reset Service