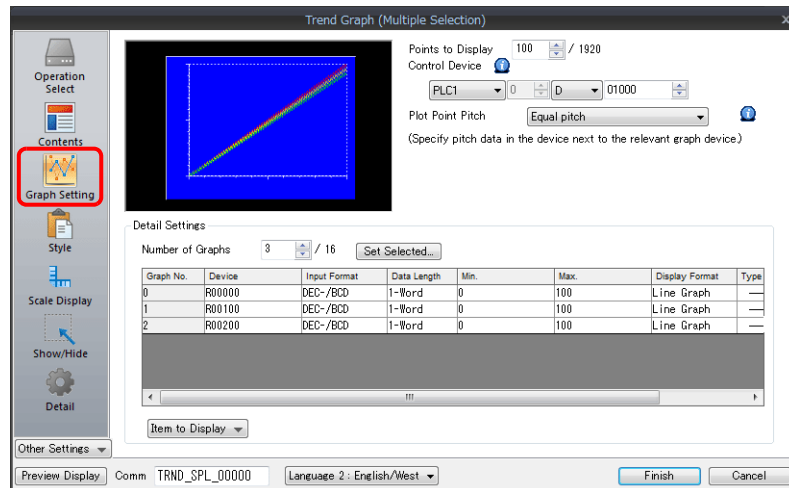


Graph Setting

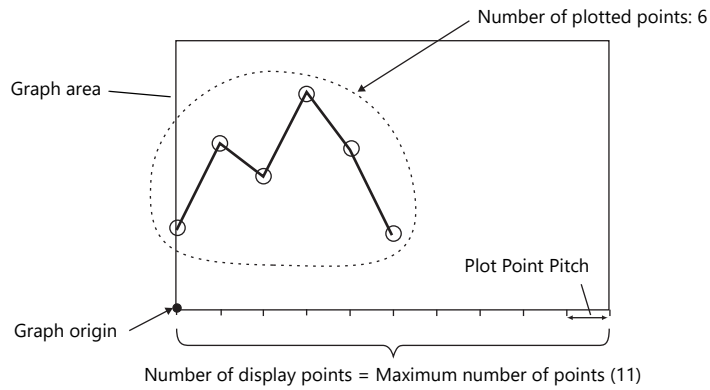


Item	Description																																
Points to Display ^{*1}	Set the number of plot points along the horizontal axis. <ul style="list-style-type: none"> - 640 × 480 dots: 3 to 640 - 800 × 600 dots: 3 to 800 																																
Control Device	<table border="1" style="margin-left: auto; margin-right: auto;"> <tr> <td>15</td><td>14</td><td>13</td><td>12</td><td>11</td><td>10</td><td>09</td><td>08</td><td>07</td><td>06</td><td>05</td><td>04</td><td>03</td><td>02</td><td>01</td><td>00</td> </tr> <tr> <td></td><td></td><td>0</td><td>0</td><td>0</td><td></td><td></td><td></td><td></td><td></td><td></td><td></td><td></td><td></td><td></td><td></td> </tr> </table> <p> 0 → 1: Redraw 0 → 1: Redraw after clear Points to Display </p> <p>Number of plotted points ^{*1}: 0 to 1024</p> <p>Set the number of points to display. The content of the device memory addresses set for numbers 0 to 15 is read for the specified number of points.</p> <p>Redraw ^{*2}</p> <p>The number of points to display are redrawn. 0 → 1 Drawing is performed over the previous graph without clearing the graph area. The previously displayed image remains.</p> <p>Redraw after clear ^{*2}</p> <p>The number of points to display are redrawn. 0 → 1 Drawing is performed after clearing the graph area. Only the latest graph is displayed.</p>	15	14	13	12	11	10	09	08	07	06	05	04	03	02	01	00			0	0	0											
15	14	13	12	11	10	09	08	07	06	05	04	03	02	01	00																		
		0	0	0																													
Plot Point Pitch	<p>Equal pitch Space all points equally.</p> <p>Specify the scale range Specify the interval between points using the scale range.</p> <p>Specify the number of dots Specify the interval between points with the number of dots.</p> <p>For details, refer to "7.3.3 Plot Point Pitch" page 7-39.</p>																																
Detailed Settings	Number of Graphs	Set the number of graph lines. Max. 16																															
	Device	The contents of this device memory address is read and displayed on the graph. The required number of addresses varies depending on the setting for [Points to Display] and [Data Length]. For details, refer to "7.3.3 Plot Point Pitch" page 7-39.																															
	Use Range	Point pitch: when specified with the number of dots																															
	Input Format	Set data format of device memory values. DEC- / BCD ^{*3} / Actual Number ^{*4} The selection here also applies to minimum, maximum, and X axis scale values.																															
	Data Length	Select the data length for one plot point. 1-Word/2-Word																															
	Min. ^{*5}	Set the graph display area. (PLC device memory ^{*6} / internal device memory ^{*6} / constant)																															
	Max. ^{*5}																																
	Min. Scale ^{*5}	Set when [Graph Setting] → [Plot Point Pitch] is set to [Specify the scale range]. For details, refer to "7.3.3 Plot Point Pitch" page 7-39.																															
	Max. Scale ^{*5}																																
	Display Format	Set the graph type (line or marker) and color.																															
Type																																	
Color																																	

Item	Description
Item to Display	Change the items displayed in the [Detail Settings] area.

*1 Number of display points

Direction: RGT



If a value larger than the X size (dots) of the graph area is specified for [Points to Display], the graph will not be drawn correctly.

*2 "Redraw" and "redraw after clear"

When redrawing, select the "Redraw" or "Redraw after clear" bit.
If the interval between redrawing is too short, the graph may not be redrawn even at the leading edge.
Once displayed, data on the graph cannot be changed unless the redrawing command is given.

*3 When [DEC-/BCD] is selected, the setting for [System Setting] → [Hardware Setting] → [PLC Properties] → [Code] → [DEC/BCD] takes effect.

*4 If any value (non-numeric inclusive) specified is outside the range usable on MONITOUCH, the value cannot be displayed.

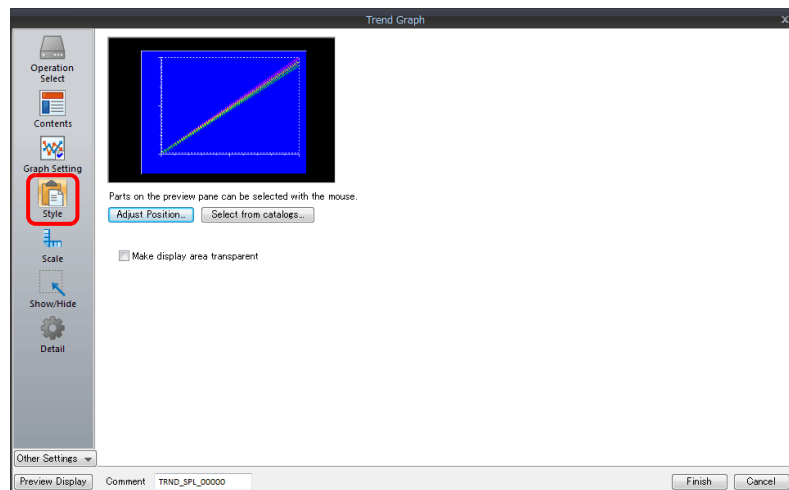
For details on the allowable range, refer to "5.1.4 Real Numbers (Floating Point Numbers)".

*5 Max., Min., Max. Scale, Min. Scale

Do not specify the same value for both maximum and minimum values. Doing so will result in an error when transferring data to the unit. Make sure to set valid values.

*6 When minimum and maximum values are set with a device memory address (other than [Constant]), these values are updated when the graph is displayed or when a "redraw" or a "redraw after clear" is commanded by the control device memory.

Style



Item	Description
Adjust Position	Adjust the placement position.
Select from catalogs	Change parts.
Make display area transparent	Make the display area transparent.