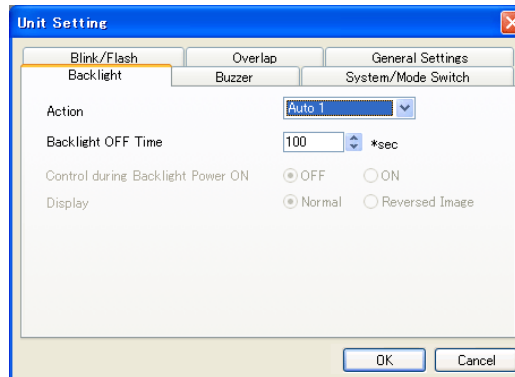


## Backlight

Select the operation of the backlight attached to the V8 series unit.



Action	<p><b>Always ON</b> The backlight is always on.</p> <p><b>Auto 1</b> Backlight OFF conditions: The backlight is shut off when the time specified by [Backlight OFF Time] has elapsed from the instant when all the following conditions are met. <sup>*1</sup></p> <ul style="list-style-type: none"> <li>• Bit 11 of read area “n + 1”: OFF</li> <li>• Screen display (lamp, data display, calendar, etc.) stands still.</li> <li>• Touch switch: OFF</li> </ul> <p>Backlight ON conditions: The backlight is turned on when any of the following conditions is met. <sup>*2</sup></p> <ul style="list-style-type: none"> <li>• Bit 11 of read area “n + 1”: ON (always ON)</li> <li>• Screen display has changed.</li> <li>• Somewhere on the screen is touched.</li> <li>• Normal/call-overlap: ON/OFF</li> <li>• Multi-/global overlap: ON/OFF, the overlap number changed</li> </ul> <p><b>Auto 2</b> Backlight OFF conditions: The backlight is shut off when the time specified by [Backlight OFF Time] has elapsed from the instant when all the following conditions are met. <sup>*1</sup></p> <ul style="list-style-type: none"> <li>• Bit 11 of read area “n + 1”: OFF</li> <li>• Touch switch: OFF</li> </ul> <p>Backlight ON conditions: The backlight is turned on when any of the following conditions is met. <sup>*2</sup></p> <ul style="list-style-type: none"> <li>• Bit 11 of read area “n + 1”: ON (always ON)</li> <li>• Somewhere on the screen is touched.</li> </ul>
--------	---

Action	<p><b>Auto 3</b></p> <p>Backlight OFF conditions: The backlight is shut off when the time specified by [Backlight OFF Time] has elapsed from the instant when all the following conditions are met. *1</p> <ul style="list-style-type: none"> <li>• Bit 11 of read area “n + 1”: OFF</li> <li>• Touch switch: OFF</li> </ul> <p>Backlight ON conditions: The backlight is turned on when any of the following conditions is met. *2</p> <ul style="list-style-type: none"> <li>• Bit 11 of read area “n + 1”: ON (always ON)</li> <li>• Screen changed</li> <li>• Somewhere on the screen is touched.</li> <li>• Normal/call-overlap: ON/OFF</li> <li>• Multi-/global overlap: ON/OFF, the overlap number changed</li> </ul> <p><b>Manual</b></p> <p>Backlight OFF conditions: The backlight is turned off when either operation is performed.</p> <ul style="list-style-type: none"> <li>• Press [SYSTEM] → [F5] on the MONITOUCH. *3</li> <li>• Bit 11 of read area “n + 1” OFF (at the falling edge of [1→0])</li> </ul> <p>Backlight ON conditions: The backlight is turned on when any of the following conditions is met. *2</p> <ul style="list-style-type: none"> <li>• Somewhere on the screen is touched.</li> <li>• Press a function switch. *3</li> <li>• Bit 11 of read area “n + 1” ON (at the leading edge of [0→1])</li> </ul> <p><b>Manual 2*4</b></p> <p>Backlight OFF conditions: The backlight is turned off when either operation is performed.</p> <ul style="list-style-type: none"> <li>• Press [SYSTEM] → [F5] on the MONITOUCH. *3</li> <li>• Bit 11 of read area “n + 1” OFF (at the falling edge of [1→0])</li> </ul> <p>Backlight ON conditions: The backlight is turned on when any of the following conditions is met.</p> <ul style="list-style-type: none"> <li>• Press [SYSTEM] → [F5] on MONITOUCH.</li> <li>• Bit 11 of read area “n + 1” ON (at the leading edge of [0→1])</li> </ul>														
Backlight OFF Time	<p>0 to 65535 (sec)</p> <p>This is valid when [Auto 1], [Auto 2] or [Auto 3] is selected for [Action]. Set the length of time that elapses before the backlight is turned off when the OFF conditions have been met.</p>														
Control during Backlight Power ON	<p>This is valid when [Manual] or [Manual 2] is selected for [Action]. Select the backlight ON/OFF status when the power is turned on and when the mode is changed from STOP → RUN.</p>														
Display	<p>This is valid for MONITOUCH with monochrome display. This setting determines whether or not the display on MONITOUCH should be shown in reverse video.</p> <table border="1" data-bbox="511 1456 1153 1561"> <thead> <tr> <th rowspan="2">V-SFT</th> <th colspan="2">Normal</th> <th colspan="2">Reversed Image</th> </tr> <tr> <th>Black</th> <th>White</th> <th>Black</th> <th>White</th> </tr> </thead> <tbody> <tr> <td>MONITOUCH</td> <td>Black</td> <td>White</td> <td>White</td> <td>Black</td> </tr> </tbody> </table>	V-SFT	Normal		Reversed Image		Black	White	Black	White	MONITOUCH	Black	White	White	Black
V-SFT	Normal		Reversed Image												
	Black	White	Black	White											
MONITOUCH	Black	White	White	Black											

\*1 When the redisplay of the entire screen takes place, such as a screen change or turning on and off or switching an overlap display, the time measured for [Backlight OFF Time] is cleared.

\*2 No switch data will be output if a switch is pressed once with the backlight off. When a switch is pressed once with the backlight off, the backlight is turned on. Switch data will be output from switch operation that is made after 500 ms has elapsed since the backlight was turned on.

\*3 Invalid when bit 11 of read area “n + 1” is set (ON)

\*4 Switches on the screen can be operated when the backlight is off. This is compatible with the V4 series.