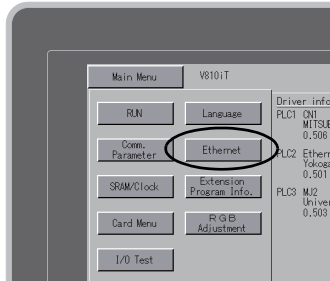


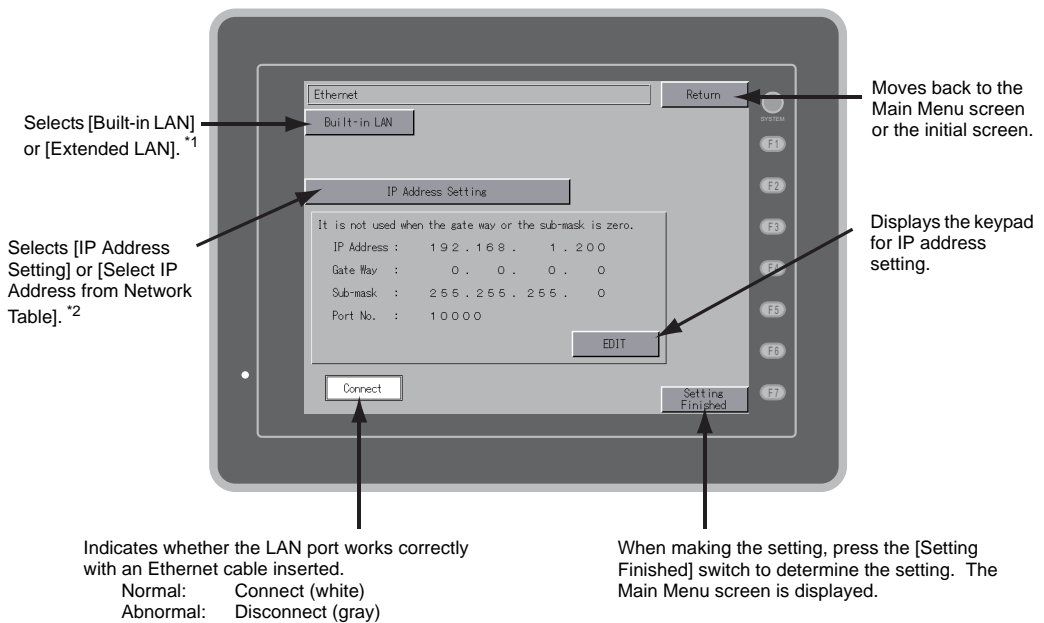
## 4. Ethernet

Pressing the [Ethernet] switch on the Main Menu drop-down window brings up the Ethernet screen. This screen is used for setting an IP address for the V8 unit.

Main Menu drop-down window



Ethernet screen



\*1 This is valid only when the Ethernet unit CU-03-3 is installed.

\*2 Refer to the V8 Series Connection Manual.