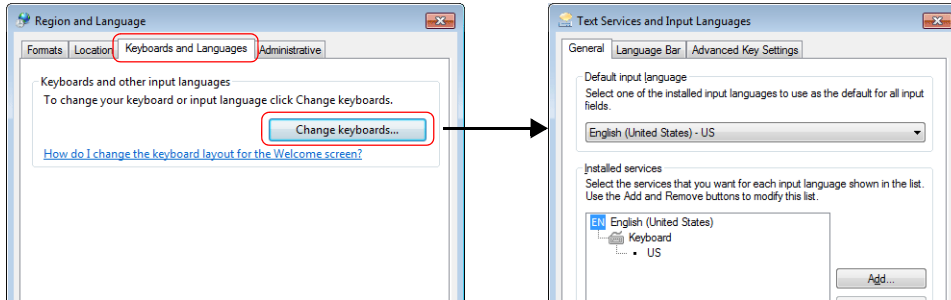


8.3.2 Screen Editing

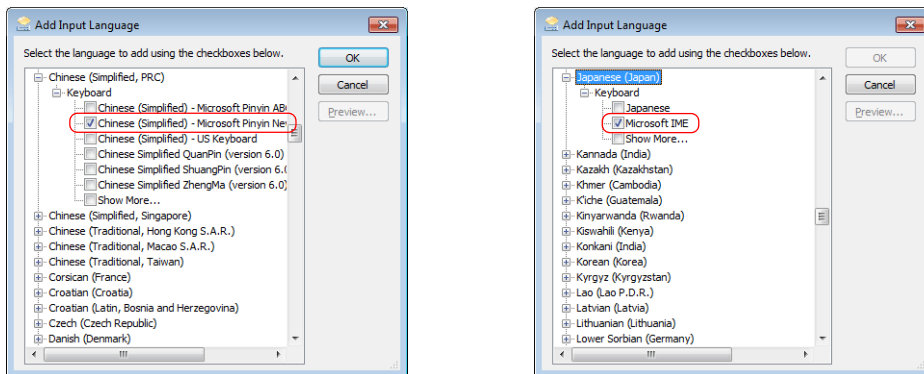
Before Editing Languages

To edit each language on the PC, each input language must be added to the PC. This section uses Windows 7 to explain the procedure for adding Japanese and Chinese (simplified) (IME installation).

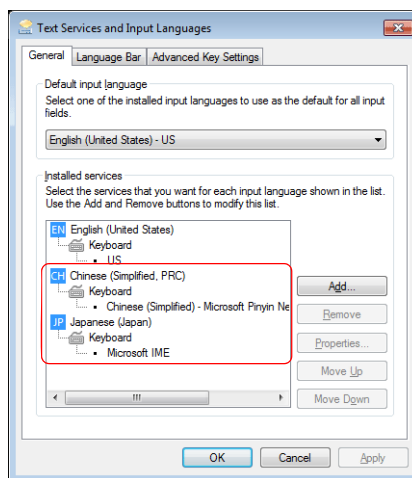
1. In Windows 7, click [Start] → [Control Panel].
2. Click [Change keyboards or other input methods] or [Region and Language].
3. Click [Change keyboards] on the [Keyboards and Languages] tab window to display the [Text Services and Input Languages] window.



4. Click [Add].
5. Select the following checkboxes and click [OK].



6. Check that Japanese and Chinese are added and click [OK].



The necessary settings have been completed. Japanese and Chinese can be entered by switching between languages on the PC's language bar.

