


## 13.5 Operating the PDF Viewer

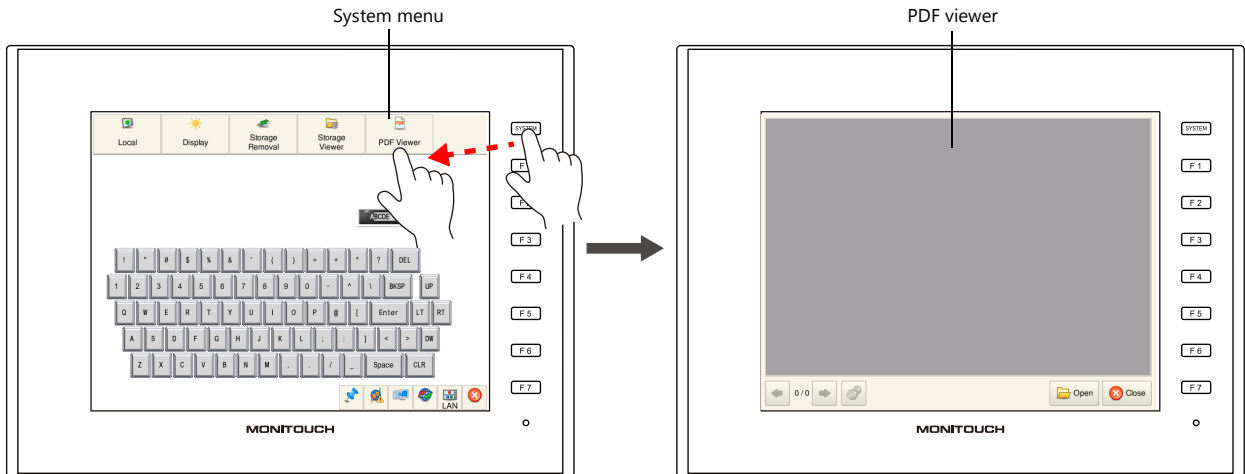
### 13.5.1 Displaying from the System Menu

The PDF viewer can be displayed by pressing the [PDF Viewer] switch on the system menu. Therefore it can be displayed in both RUN mode and Local mode.

 The PDF viewer can also be displayed in RUN mode by the following methods.

- Switch Function → "13.3.1 Displaying by Switch "Function: PDF Viewer Display"" page 13-4
- PLC Commands → "13.3.2 Displaying by Commanding from PLC" page 13-6

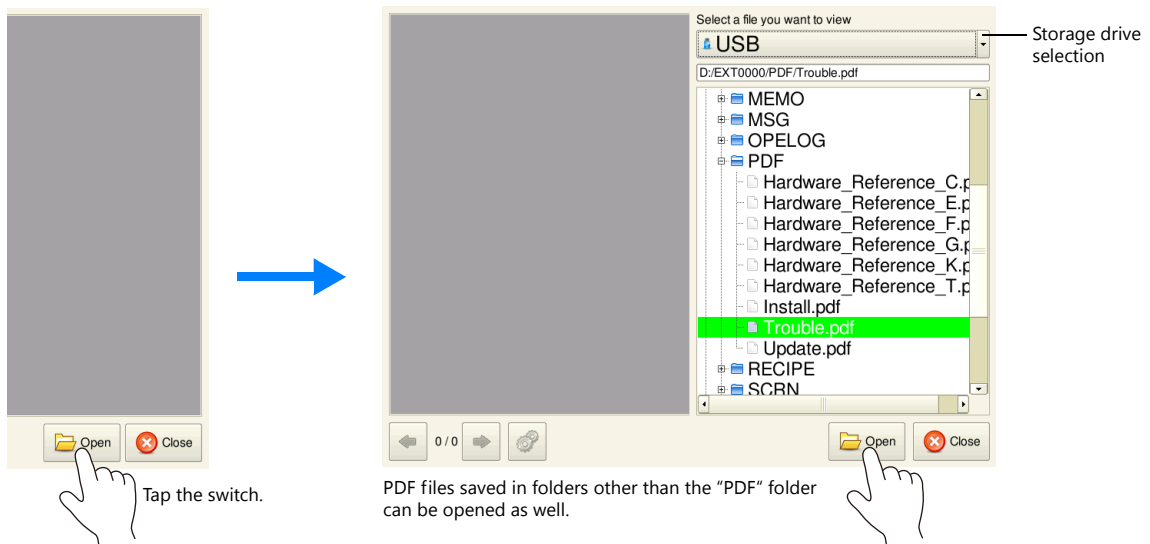
Press the [SYSTEM] switch to display the system menu.  
Tap the [PDF Viewer] switch to display the PDF viewer.



\* If the [PDF Viewer] is not shown on the system menu, scroll the system menu sideways.

### 13.5.2 Changing PDF Files to Display

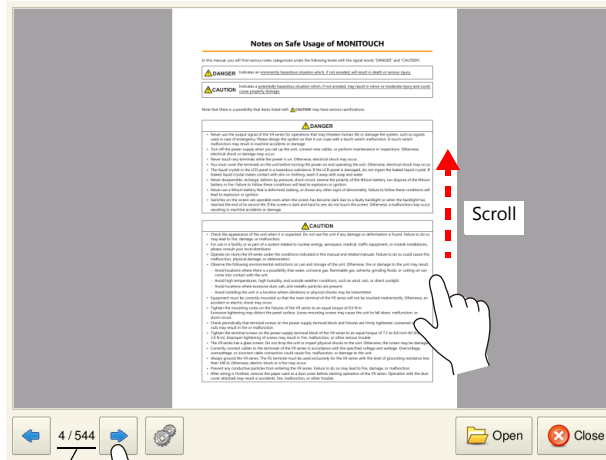
Tap the [Open] switch on the PDF viewer. Select the PDF file to display and tap the [Open] switch.



\* Larger PDF files will take more time to open.

### 13.5.3 Changing the Display Page

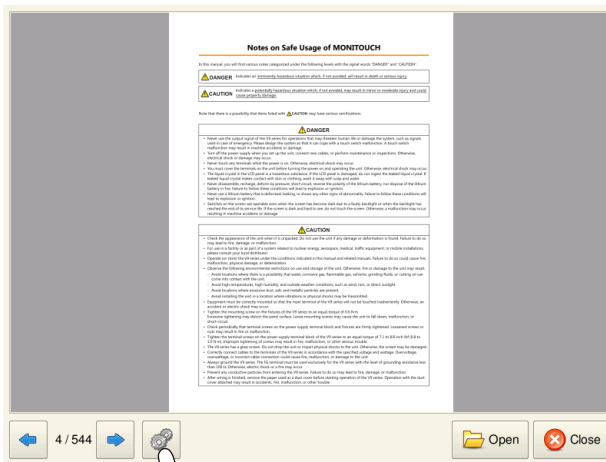
Tap the [←] and [→] switches on the PDF viewer or scroll the display to change the displayed page.



Current page number/Total pages Tap the [→] switch.

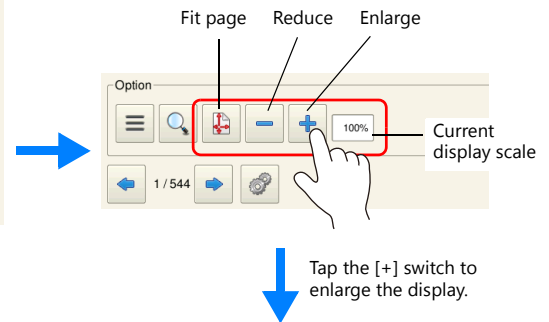
### 13.5.4 Display Scale

Tap the option switch on the PDF viewer. The following menu is displayed.  
Tap the [+] and [-] switches to enlarge and reduce the display respectively.

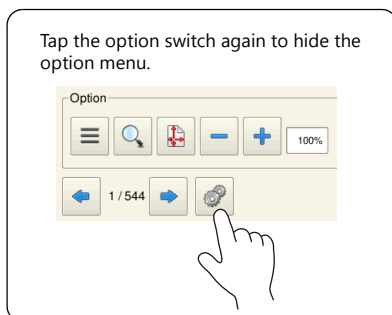


Tap the option switch.

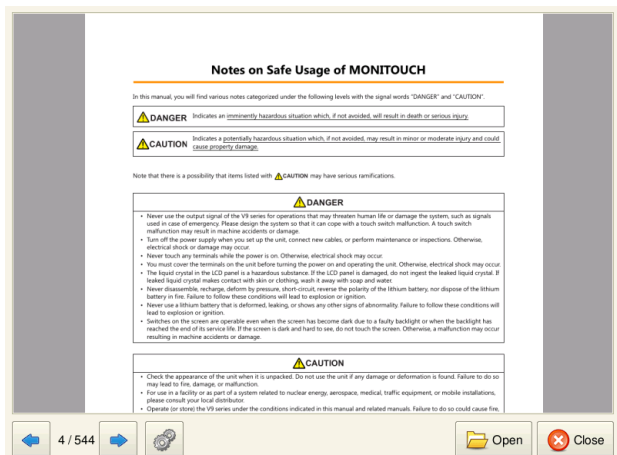
[+]: Enlarge by 25% (up to 200%)  
[-]: Reduce by 25% (down to 50%)



Tap the [+] switch to enlarge the display.



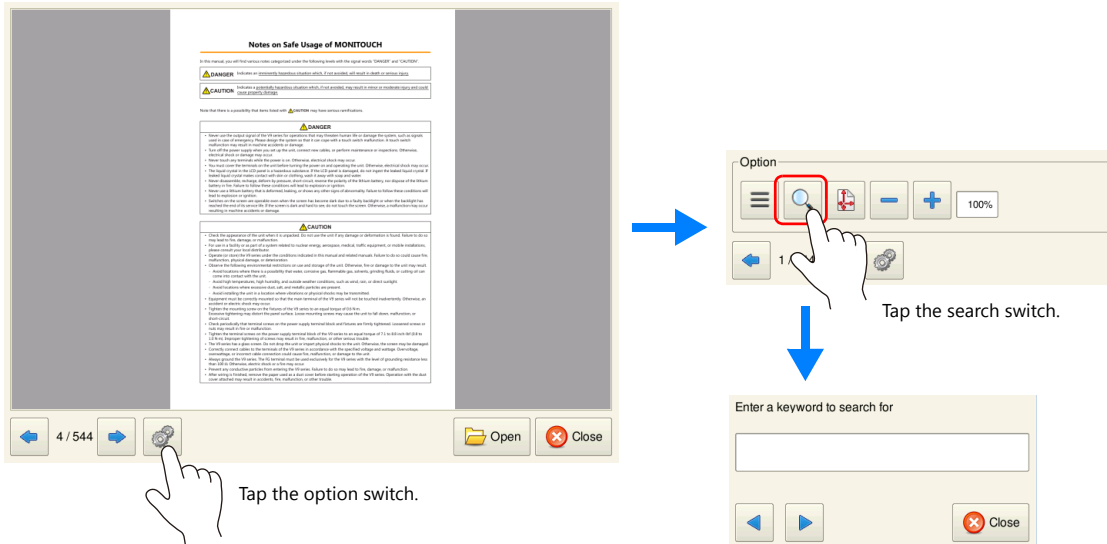
Tap the option switch again to hide the option menu.



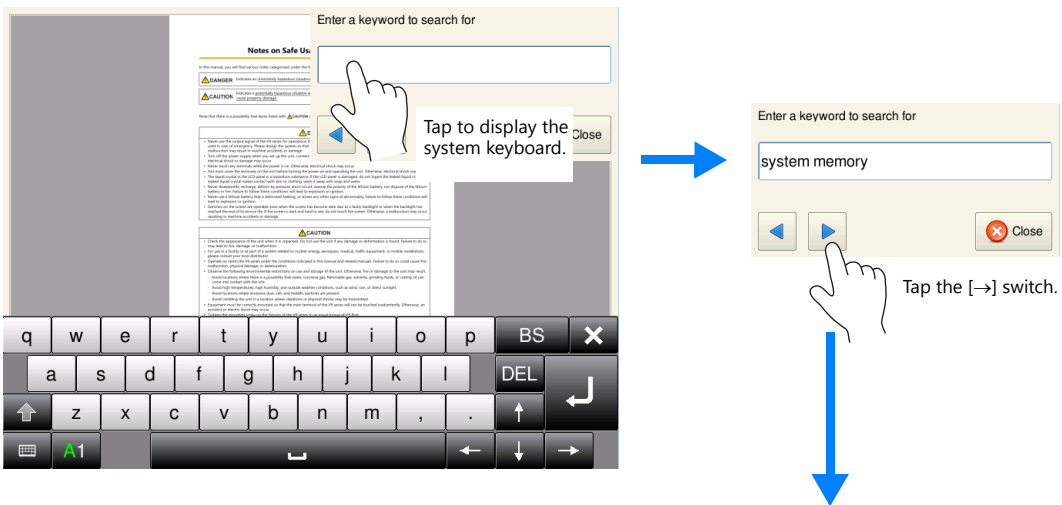
## 13.5.5 Search Function

### Text

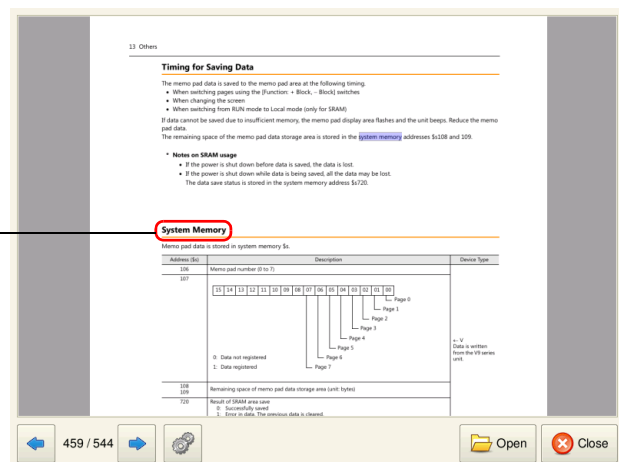
Tap the option switch on the PDF viewer. The following menu is displayed.  
Tap the search switch on the PDF viewer to display the search window.



Tap the [Enter a keyword to search for] field. The system keyboard appears. Enter the text to search for and tap the [←] or [→] switch. The cursor moves to text that matches the search.



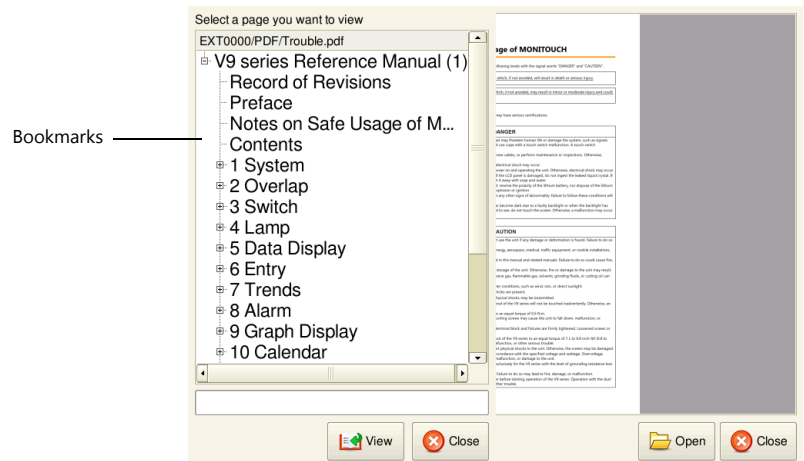
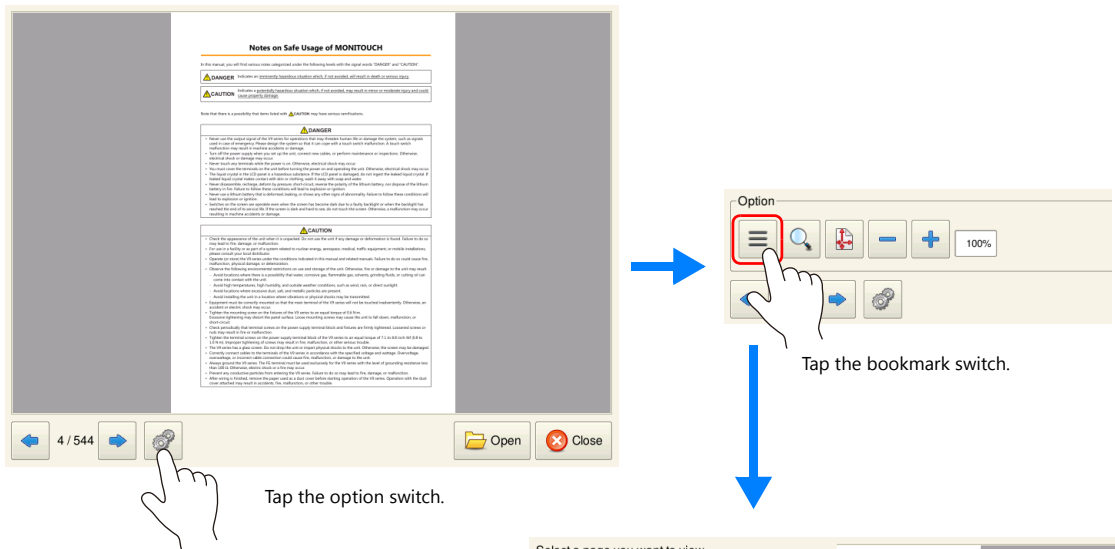
The cursor moves to text that matches the search.



\* To enter Japanese text, the [System Setting] → [Japanese Conversion Function Setting] checkbox must be selected.

## Bookmarks

Tap the option switch on the PDF viewer. The following menu is displayed.  
Tap the bookmark switch on the PDF viewer.



Select a bookmark and tap the [View] switch.

