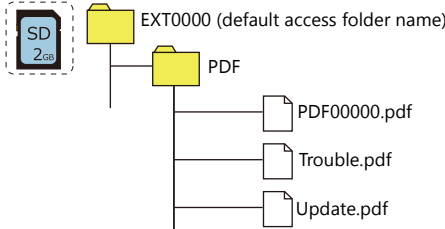


13.2 Preparation of PDF Files

This section describes the specifications of PDF files that can be viewed on the PDF viewer and the procedure for saving a PDF file to a storage device.

PDF File Specifications

The specifications are as follows:

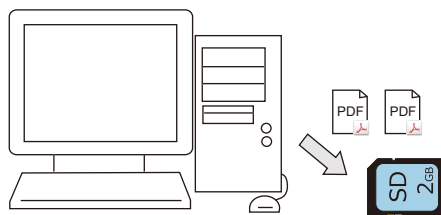
Item	Specifications
File Name	<ul style="list-style-type: none"> PDFxxxx.pdf (xxxx: 00000 to 99999) (For specification by file number) xxxxxx.pdf (64 or less one-byte characters or 32 or less two-byte characters)
File size	No limitation *1
Number of pages	Maximum 65,535 pages in one file
Supported languages	Languages selected at [System Setting] → [Multi-language Setting] → [Transfer Font Setting] tab window. *2
PDF version	1.0 to 1.7
PDF file storage location	Computer C:\MONITOUCH\User\PDF (default) Storage device <ul style="list-style-type: none"> When displaying by selecting on the PDF viewer: No settings are required. When displaying by giving a command (control device memory) from a PLC: (output drive)\access folder\PDF 

*1 Larger PDF files and those with many figures and images will take longer to open

*2 PDF files created with font information embedded can be displayed regardless of the fonts selected in the [Transfer Font Setting] tab window.

Storing Files on a Storage Device (Storage Manager)

When displaying PDF files by giving a command (control device memory) from a PLC, a PDF file on the PC must be saved to the "PDF" folder in the storage device. This section describes the procedure for saving PDF files to a storage device.

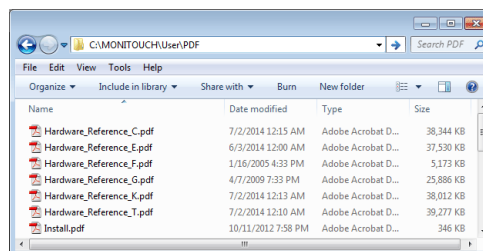


Save PDF files to an SD card. *

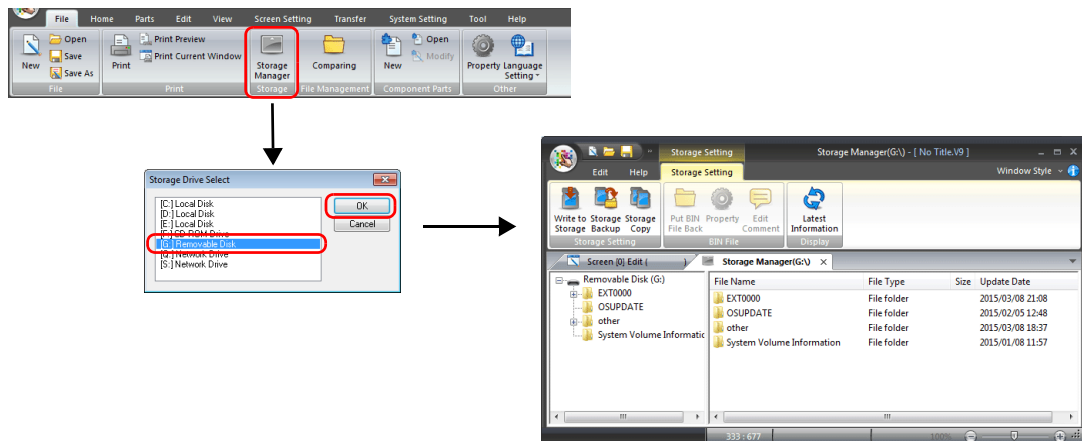
* Use the V-SFT storage manager.

1. Save PDF files to the following location.

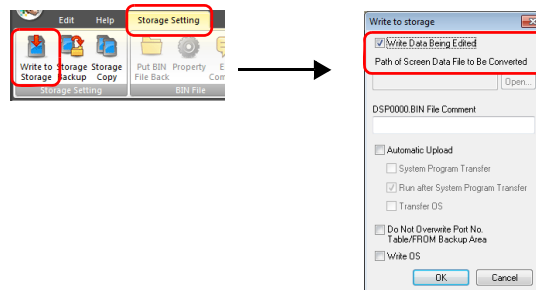
C:\MONITOUCH\User\PDF (default)



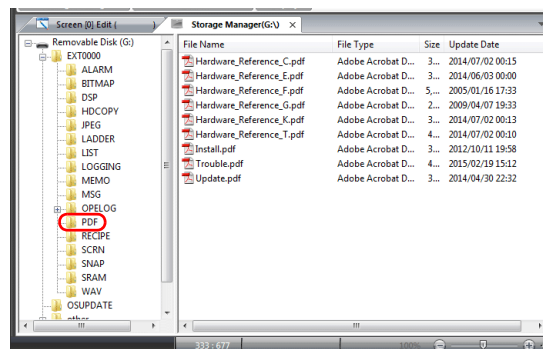
- Click [File] → [Storage Manager] in V-SFT.
Specify the drive where the storage device is inserted and click [OK]. The [Storage Manager] window is displayed.



- On the [Storage Setting] ribbon menu, click [Write to Storage]. On the displayed window, select the relevant screen program.



- When the settings are complete, click [OK]. PDF files are written to the "PDF" folder under the access folder. (output drive)\access folder\PDF



* If there already is a "PDF" folder under the access folder, PDF files can be directly copied into it.