

# SOFT MONITOUCH

## TELLUS and V-Server

### License Validation

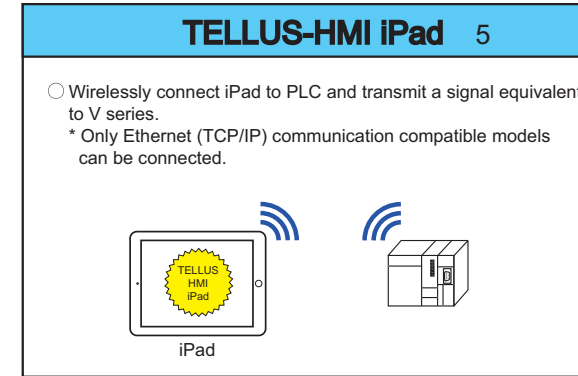
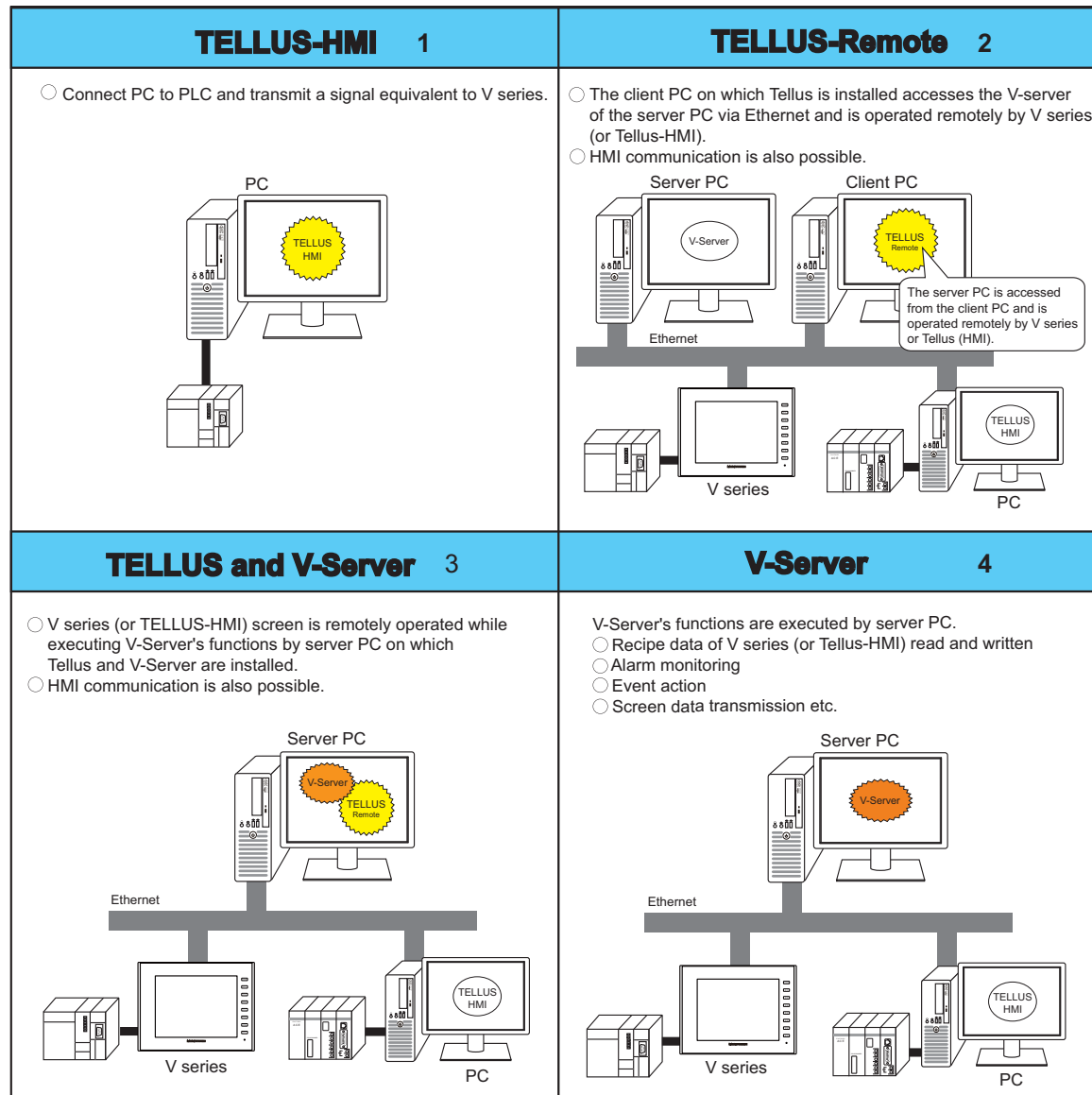
#### License Validation

When you use SOFT MONITOUCH TELLUS and V-Server, you must do the license validation by using USB license key or entering password. You can use SOFT MONITOUCH TELLUS and V-Server with the following restrictions as the trial period until the license validation is finished. Check the type of license for functions to be used before applying for the licenses. Regarding the types of license, refer to the reverse page.

#### Restrictions

- When using TELLUS-HMI, TELLUS-Remote, Emulator, or V-Server, a warning message appears one hour after the program is started and the application closes automatically.
- TELLUS-Remote can be started 100 times only.
- TELLUS-HMI iPad can be only used within 30 days of its first run or 100 times.

#### License Types



#### License Form

License validation is USB license key or entering password.

USB key	
TELLUS-HMI USB key	1
TELLUS-Remote USB key	2
TELLUS and V-Server USB key	3

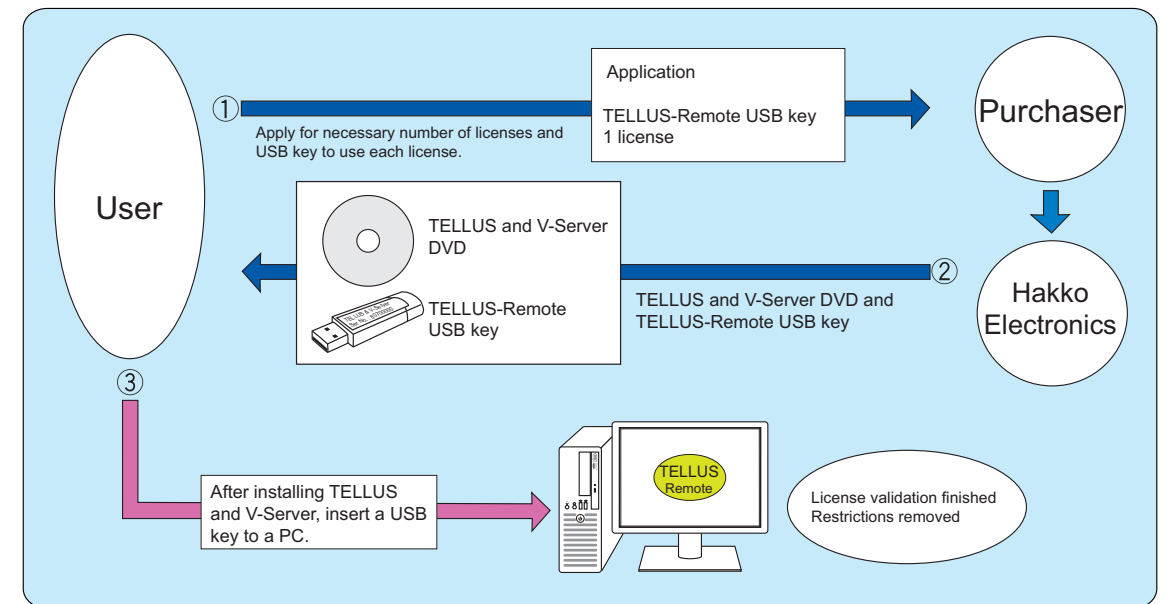
Password	
TELLUS-HMI	1
TELLUS-Remote	2
TELLUS and V-Server	3
V-Server	4
TELLUS-HMI iPad	5

#### License Validation by Using USB License Key

There are three types of licenses. Check the type of license for the function(s) to be used before applying for the license(s).

#### Example for Applying

- In the case of applying for a license for TELLUS-Remote



## License Validation by Entering Password

There are five types of licenses, one for each function (see reverse side). Check the type of license for the function(s) to be used before applying for the license(s). Be sure to complete the license validation procedure, after which you will be issued a password. License validation is restricted to one license per device.

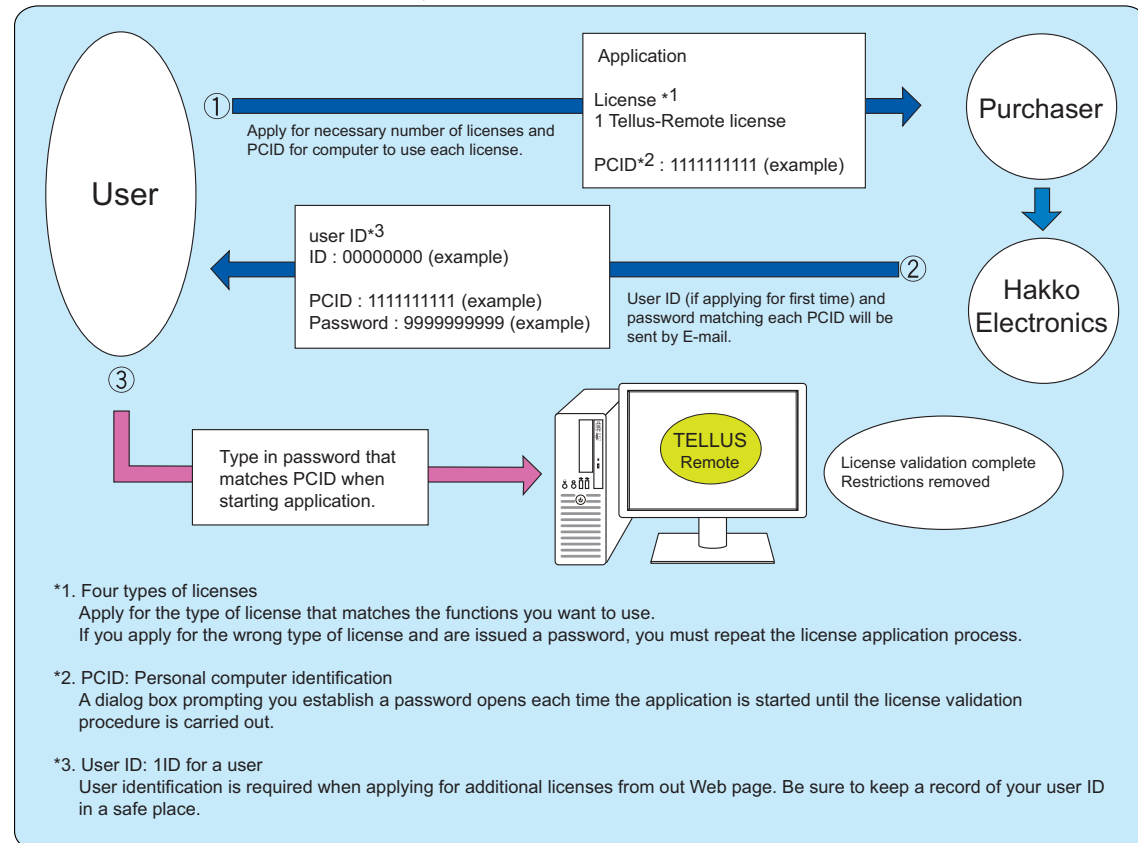
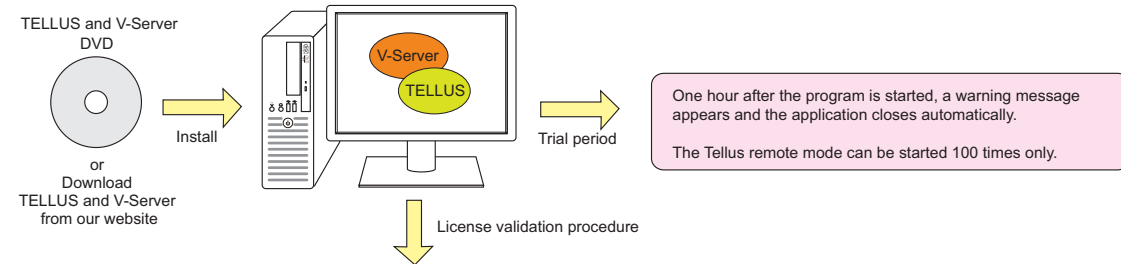
Download of Application Form: [www.monitouch.fujielectric.com/site/download-e/other/ApplicationForm\\_4100NE.xlsx](http://www.monitouch.fujielectric.com/site/download-e/other/ApplicationForm_4100NE.xlsx)

### Notes

- If reinstalling the application software on the same device, the same password may be used. If reinstalling in the same device after the operating system has been reformatted, the PCID is changed, thus making the password invalid. In this case, you must go through the license validation procedure again to get a new password.
- If you modify the device in which the application software is installed, the password will become invalid. In this case, you must go through the license validation procedure again to get a new password. Your user ID is necessary to get a new password.
- If you have any questions, please consult your local sales representative.

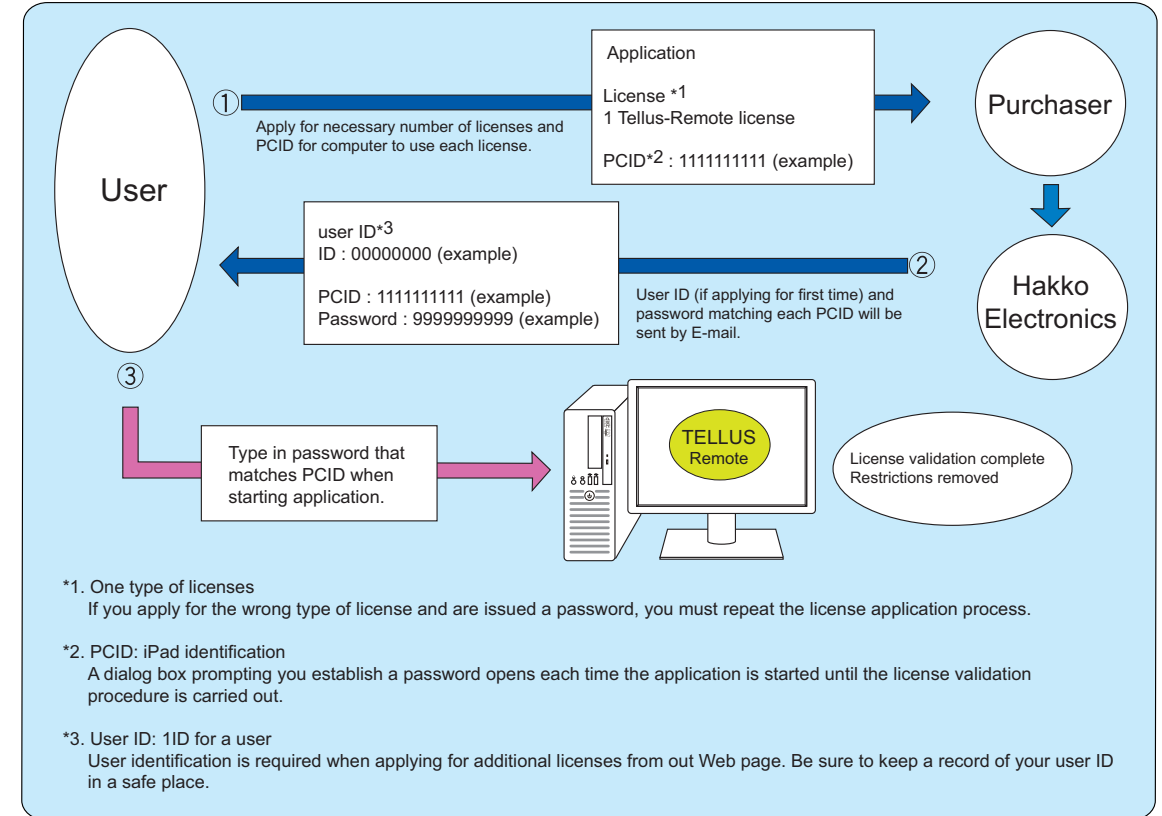
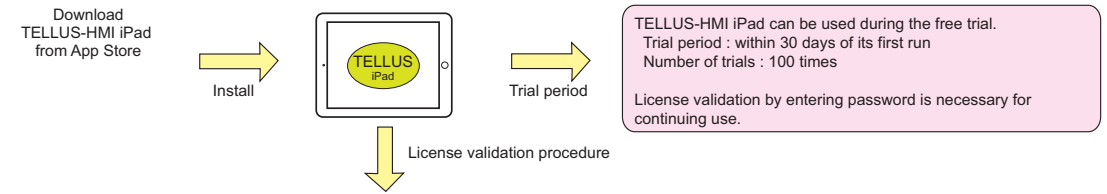
### Example 1 for Applying

- In the case of applying for a licence for TELLUS-Remote



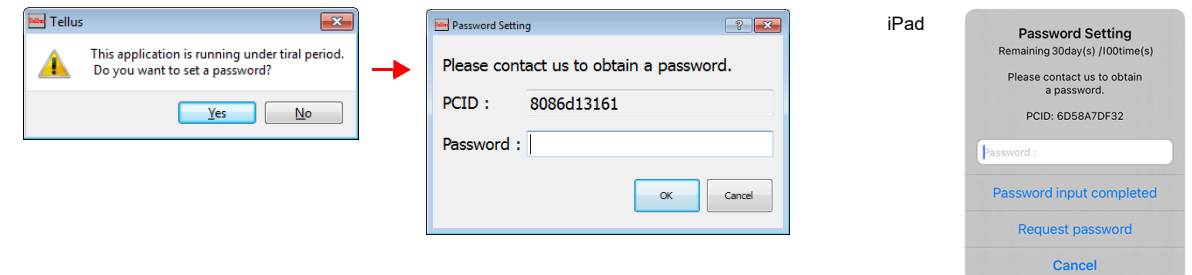
### Example 2 for Applying

- In the case of applying for a licence for TELLUS-HMI iPad



### How to confirm PCID and set the password

1. Start the Tellus or V-Server.
2. The following dialog box opens. Click the Yes button. The Password Setting dialog box opens so you can confirm the PCID, and set the password.



**!** The PCID and password must match each other. This restriction cannot be passed by typing in the Password setting issued for other devices. Type in the correct password.

**FE** Hakko Electronics Co., Ltd.

890-1, Kamikashiwano-machi, Hakusan-shi, Ishikawa, 924-0035 Japan  
TEL : 81-76-274-2144 / FAX : 81-76-274-5136 URL [www.monitouch.com](http://www.monitouch.com)