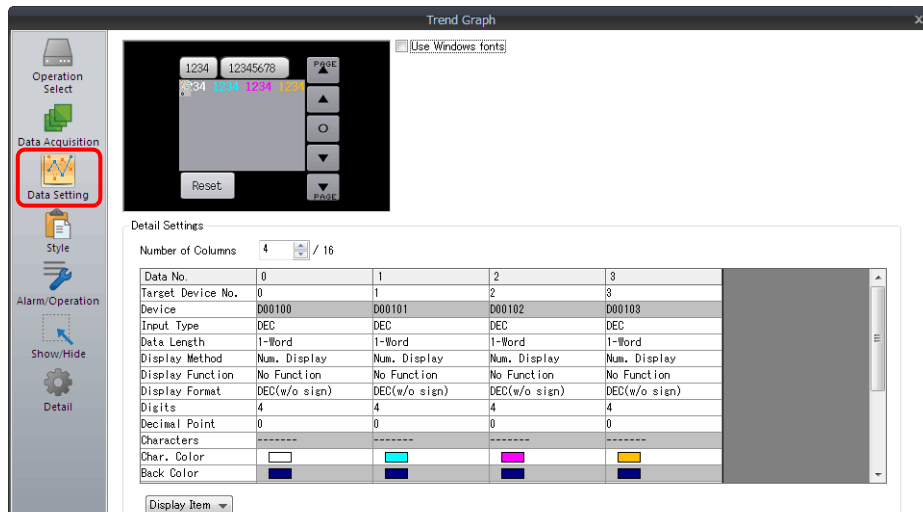


Graph Setting



Item	Description																																
Points to Display ^{*1}	Set the number of plot points along the horizontal axis. - 320 × 240 dots: 3 to 320 - 800 × 480 dots: 3 to 800																																
Control Device	<table border="1" style="margin-left: auto; margin-right: auto;"> <tr> <td>15</td><td>14</td><td>13</td><td>12</td><td>11</td><td>10</td><td>09</td><td>08</td><td>07</td><td>06</td><td>05</td><td>04</td><td>03</td><td>02</td><td>01</td><td>00</td> </tr> <tr> <td></td><td></td><td>0</td><td>0</td><td>0</td><td></td><td></td><td></td><td></td><td></td><td></td><td></td><td></td><td></td><td></td><td></td> </tr> </table> <p style="margin-left: 40px;"> $0 \rightarrow 1$: Redraw $0 \rightarrow 1$: Redraw after clear \swarrow Points to Display </p> <p>Number of plotted points ^{*1}: 0 to 1024</p> <p>Set the number of points to display. The content of the device memory addresses set for numbers 0 to 15 is read for the specified number of points.</p> <p>Redraw ^{*2}</p> <p>The number of points to display are redrawn. $0 \rightarrow 1$ Drawing is performed over the previous graph without clearing the graph area. The previously displayed image remains.</p> <p>Redraw after clear ^{*2}</p> <p>The number of points to display are redrawn. $0 \rightarrow 1$ Drawing is performed after clearing the graph area. Only the latest graph is displayed.</p>	15	14	13	12	11	10	09	08	07	06	05	04	03	02	01	00			0	0	0											
15	14	13	12	11	10	09	08	07	06	05	04	03	02	01	00																		
		0	0	0																													
Plot Point Pitch	<p>Equal pitch Space all points equally.</p> <p>Specify the scale range Specify the interval between points using the scale range.</p> <p>Specify the number of dots Specify the interval between points with the number of dots.</p> <p>For details, refer to "7.3.3 Plot Point Pitch" page 7-34.</p>																																
Detailed Settings	Number of Graphs	Set the number of graph lines. Max. 16																															
	Device	The contents of this device memory address is read and displayed on the graph. The required number of addresses varies depending on the setting for [Points to Display] and [Data Length]. For details, refer to "7.3.3 Plot Point Pitch" page 7-34.																															
	Use Range	Point pitch: when specified with the number of dots																															
	Input Format	Set data format of device memory values. DEC- / BCD ^{*3} / Actual Number ^{*4} The selection here also applies to minimum, maximum, and X axis scale values.																															
	Data Length	Select the data length for one plot point. 1-Word/2-Word																															
	Min. ^{*5}	Set the graph display area. (PLC device memory ^{*6} / internal device memory ^{*6} / constant)																															
	Max. ^{*5}																																
	Min. Scale ^{*5}	Set when [Graph Setting] → [Plot Point Pitch] is set to [Specify the scale range]. For details, refer to "7.3.3 Plot Point Pitch" page 7-34.																															
	Max. Scale ^{*5}																																
	Display Format	Set the graph type (line or marker) and color.																															
Type																																	
Color																																	