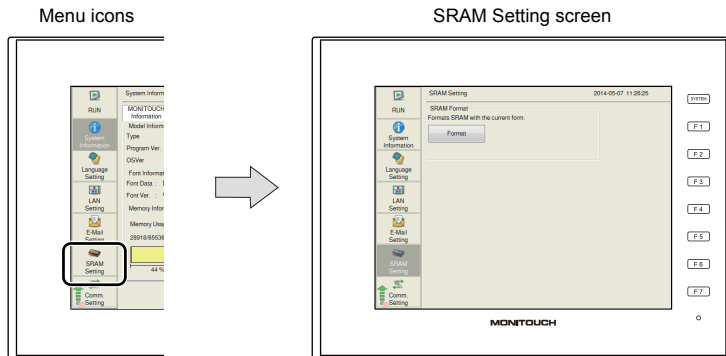



11. SRAM Setting

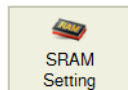
Pressing [SRAM Setting] in the menu icons brings up the SRAM Setting screen. This screen is used to format the SRAM area in the V9 series unit.



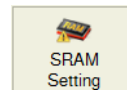
If the SRAM area allocated in the V9 series unit is different from the one configured in the [SRAM/Clock Setting] window of V-SFT version 6, the [SRAM Setting] menu icon is changed as shown below.

- * The  icon also appears when the SRAM area is occupied, the battery becomes weak or no battery is set.

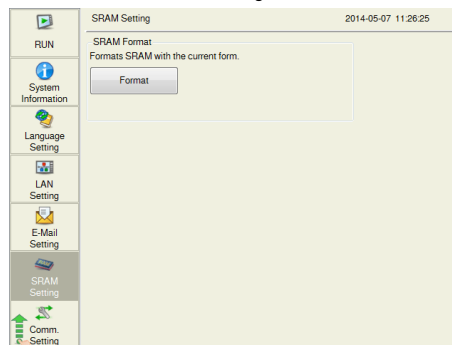
When the format matches:



When the format differs:



SRAM Setting screen



Item	Description
SRAM Format *1	Format Formats the SRAM area. For details on the formatting procedure, refer to page 2-39.

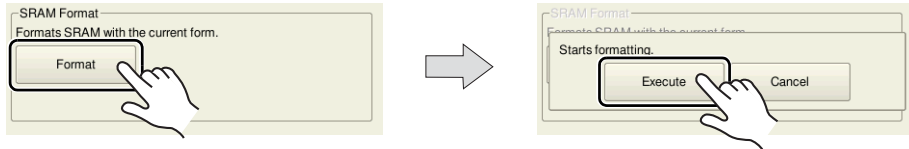
- *1 When using the SRAM area, be sure to set a battery. Otherwise, the contents in the SRAM area cannot be retained.

Formatting SRAM

An SRAM area can be formatted.

When the SRAM area is formatted, any saved data (history data saved in SRAM, internal device memory \$L, etc.) is completely cleared. Double-check before formatting the SRAM.

1. Press [SRAM Setting] in the menu icons. The SRAM Setting screen is displayed.
2. Press the [Format] switch and the [Execute] switch.
The SRAM area is formatted in the format specified in the current screen program.



3. When formatting has been completed, the message "Format completed." is displayed.

